

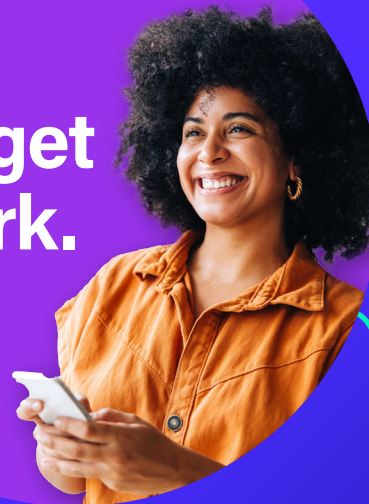
Technology that's **transforming** staffing

Bluecrew by Employbridge is a digital platform that works like a two-way marketplace. Once you post jobs through the Bluecrew app, your requests are sent to workers on the platform who are a match for your roles. This game-changing technology can help you ramp up staffing quickly – even the same day, depending on your market.

Partner with an industry leader



Let's get to work.



Contact Us:

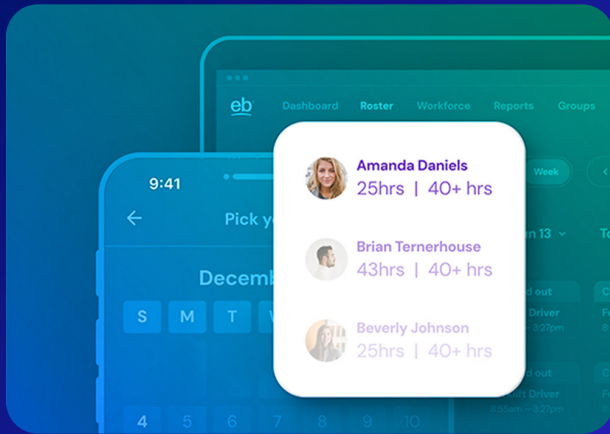
employbridge[™]
powered by Bluecrew

Build an **On-Demand** **Workforce** with us.

Local offices. National scale.
Game-changing technology.



employbridge.com



More than staffing. Workforce solutions.

You need a workforce provider that has specialized experience in your industry, and whose hiring standards and operating procedures equal or exceed your own. With Employbridge, powered by Bluecrew, you've found the right partner – one that not only delivers top talent, but solutions to help meet your business goals.

You may be familiar with one or more of the brands in the Employbridge family.

employbridge[™]

powered by Bluecrew

hire dynamics
by employbridge

select
by employbridge

remx
by employbridge

prodrivers
by employbridge

resourcemfg
by employbridge

prologistix
by employbridge

Temp talent is just the beginning

We can be your single source for quality workers, whether you need to ramp up for seasonal peaks or are hiring your next COO. Our offerings include:



**Contract and
Project-Based**



Temp-to-hire



**Direct hire/
Permanent roles**



**Recruitment Process
Outsourcing (RPO)**

Customized, full-service offerings

When you want a higher level of support, count on Employbridge. We can customize our proprietary models to your goals, including achieving KPIs, improving productivity, or creating staffing flexibility.

- **ebMax** includes a customized performance management system and an on-site team.
- **Cost Per Unit**, or CPU, is a performance-based staffing model for logistics operations and manufacturers.
- **EmployGig** is our solution for supplying W-2 gig workers.

Industries we serve

- Audio/Video
- Contact Center
- Construction
- Energy
- Healthcare
- Hospitality
- Logistics
- Manufacturing
- Retail
- Transportation

